

Total number of pages: 12

6 on one side of paper
6 on other side of paper

Paper dimensions: 360 mm

Please fold the leporello like this pink line indicates.

Front page is Lina. Back page is the page with «Share your feedback about Lina on»

Make sure that the folding line on every page is exactly where it is shown here! The space between folding line and product name must be the same for every single page.

«Thanks to» must be printed next to «Social Media Icons».

«Subscribe to Newsletter» must be printed next to «Viktiga säkerhetsanvisningar» and on the back side of «Social Media Icons».

Lina

Operating instructions
Gebrauchsanweisung
Mode d'emploi
Istruzioni per l'uso
Manual de instrucciones
Gebruiksaanwijzing
Brugsanvisning
Käyttöohje
Bruksanvisning
Bruksanvisning
Инструкция по эксплуатации



Stadler Form®

- **Important safety instructions:** Use and keep the device and fragrance globe out of reach of children.
- **Wichtige Sicherheitshinweise:** Das Gerät und die Duftkugel ausser Reichweite von Kindern in Betrieb nehmen und aufbewahren.
- **Conseils de sécurité importants :** Faites fonctionner et rangez l'appareil et le globe parfumé hors de la portée des enfants.



- **Importanti istruzioni di sicurezza :** Utilizzare e tenere l'apparecchio e la sfera per la profumazione fuori dalla portata dei bambini.
- **Advertencias de seguridad importantes:** Emplear y guardar el aparato y la bola aromática fuera del alcance de los niños.
- **Belangrijke veiligheidsinstructies:** Bedien en bewaar het apparaat en de geurball buiten bereik van kinderen.



- **Vigtige sikkerhedsinstruktioner:** Start og opbevar apparatet og duftkuglen uden for børns rækkevidde.
- **Tärkeitä turvallisuusohjeita:** Käytä laitetta ja tuoksupalloa sekä säilytä ne poissa lasten ulottuvilta.
- **Viktige sikkerhetsinstrukser:** Start og oppbevar apparatet og duftkulene utilgjengelig for barn.



- **Viktiga säkerhetsanvisningar:** Starta och förvara enheten och doftkulan utom räckhåll för barn.
- **Важные указания по безопасности:** Используйте и храните прибор и ароматический шарик в недоступном для детей месте.



Subscribe to our newsletter!





Share your feedback about Lina on:
Teilen Sie Ihr Feedback von Lina auf:
www.stadlerform.com/Reviews



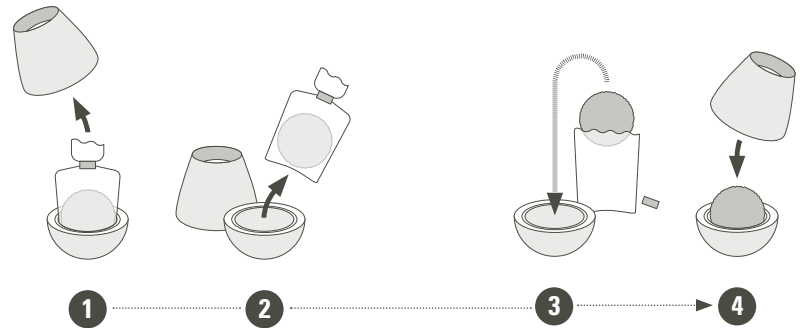
For frequently asked questions go to:
Für häufig gestellte Fragen besuchen Sie:
www.stadlerform.com/Lina/support



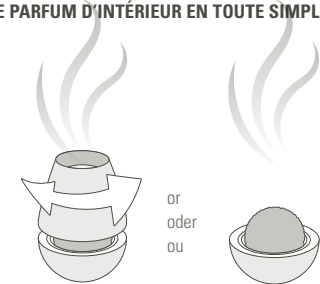
Download instruction manual:
Bedienungsanleitung hier
herunterladen:
www.stadlerform.com/Lina/manual



Watch the video of Lina:
Schauen Sie sich das Video zu Lina an:
www.stadlerform.com/Lina/video



FRAGRANCE EXPERIENCE MADE EASY
DUFTERLEBNIS EINFACH GEMACHT
LE PARFUM D'INTÉRIEUR EN TOUTE SIMPLICITÉ



or
oder
ou



Design by Bernhard | Burkard

Thanks to all people involved in this project: Barry Huang for his engagement and organization, Jerry Lee with Shen Yongjiu for the main engineering and Shu Hebo for his CAD work, Mario Rothenbühler for the photos and Fabian Bernhard and Thomas Burkard for the unique design, Matti Walker for the elegant artwork.

Martin Stadler, CEO Stadler Form Aktiengesellschaft

22-1

MANUFACTURER
Stadler Form
Aktiengesellschaft
Chamerstrasse 174
6300 Zug, Switzerland
Phone +41 41 720 48 48

DISTRIBUTION EU
Stadler Form Germany GmbH
Alt-Heerdt 104
40549 Düsseldorf, Germany
Phone +49 211 97531-640

www.stadlerform.com

Stadler Form